

1、Accessories

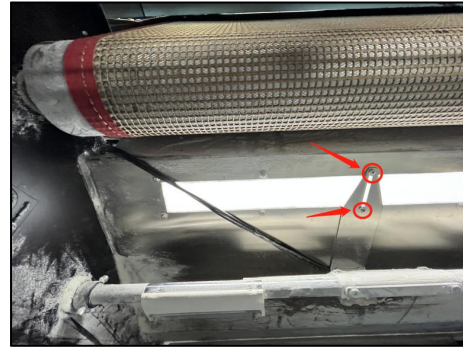
(two sensors, brackets, screws)

The sensor is mounted on the bracket.



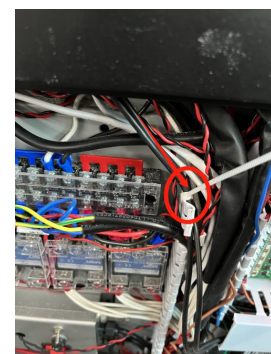
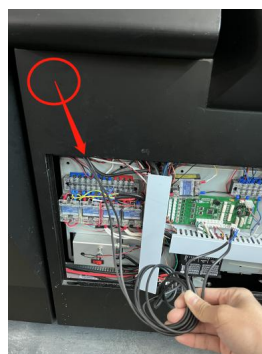
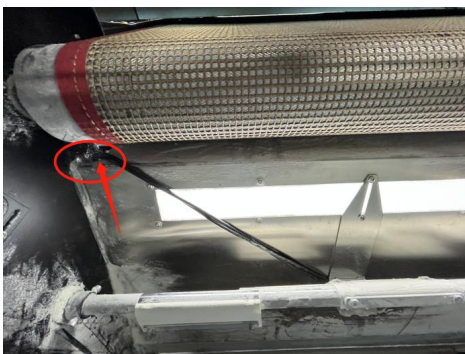
2、Bracket fixed

Remove the two screws marked in the picture, fix the bracket, and fix the bracket with two screws longer than the original.



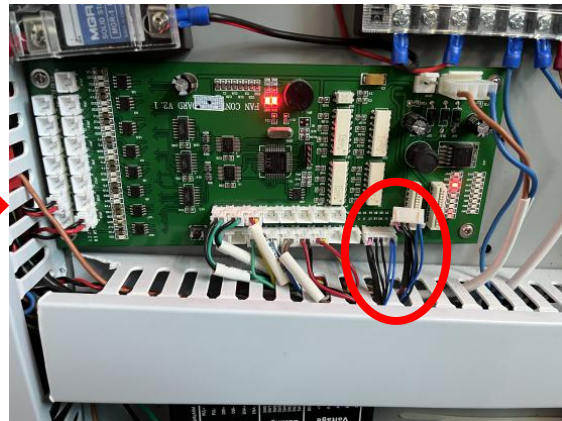
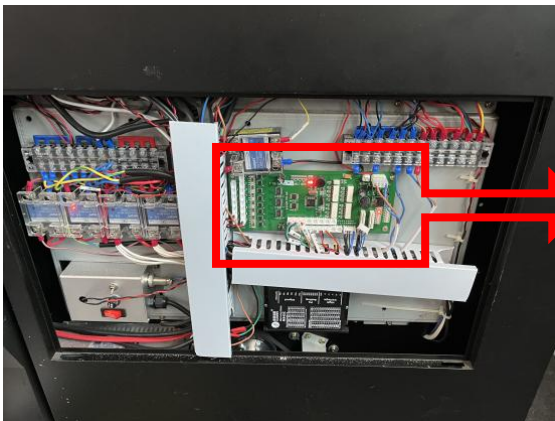
3、Layout and Fixing of Wires

Thread the wire through the hole on the lower left side of the mesh strap, then in the electrical box on the back, thread the wire out. Use cable ties to fasten the outgoing wires.



4、Connect the sensor plug

Unplug the old sensor plug and insert the new plug.



5、Power on and test

