

White ink circulation pump and stirring motor timing run instructions

Factory Mode X

File Firmware Operation

Left Right Ahead Back Reset Flush Clean

Ink control

Automatic ink:
supply ink: Disabled

In parallel for the ink:
supply ink Time: 10 s (0~25)

Cycle for the ink:
Ink supply times: 10 Times
Ink supply time: 5 s (0~25)
Supply Interval: 5 s (0~25)

☐ Enable supply ink border

White ink circulation

White ink circulation work: Enabled

White ink stirring: Disabled

White ink stirring interval time: 10 second

White ink stirring work time: 5 second

White ink cycle interval: 1 minute

White ink cycle waiting time: 10 second

White ink cycle work time: 30 second

Motor Head Print Base color UV Ink supply Clean Manual clean Flush Runing Paper Waveform setting Statistics Other

White ink circulation work: Enable/Disable (Enable: Pump work timing, Disable: Pump stop)

White ink stirring: Disable/Enable/ (Enable: Motor work timing, Disable: Motor stop) (Invalid)

White ink stirring interval time: stirring motor stop time (Invalid)

White ink stirring work time: stirring motor work time (Invalid)

White ink cycle interval time: circulation pump stop time (At the same time control the stirring motor)

White ink cycle waiting time: circulation pump waiting time (At the same time control the stirring motor)

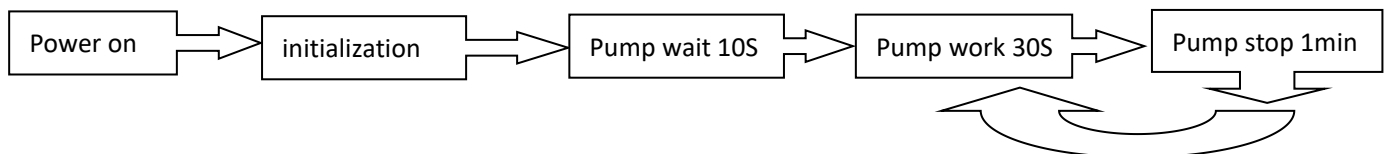
White ink cycle work time: circulation pump work time (At the same time control the stirring motor)

(Save all parameters after modification, restart the printer to take effect)

Refer to the above parameter settings as an example,

The white ink circulation pump run as follows:

(The pump stops working when the printer is printing)



The white ink stirring motor run as follows:

(The motor stops working when the printer is printing)

