

DTF-L1800-MINI-PANTHERA

USER MANUAL

BY DTFPRO



Date	Version	Language
18/02/2021	1.15	ENG

Table of Contents

WARNING:	4
GENERAL SAFETY PRECAUTIONS	5
GENERAL INFORMATION	7
WARRANTY	7
INSTRUCTIONS FOR USE	9
READ THIS FIRST	10
DISCLAIMER	11
PREPARING THE PRINTING SYSTEM	12
INSTALLING THE PRINTER	12
MATERIALS	13
TANK INSTALLATION	14
ROLL FEEDER SETUP	16
PAPER TRAY REMOVAL	16
EXIT TRAY PLACEMENT	17
OVEN AND POWDER STATION	18
BEFORE TURNING ON THE PRINTER	19
TURNING ON THE PRINTER	20
DRIVER INSTALLATION	21
INK CHARGING	22
INSTALLING ROLLPRINT SOFTWARE – DONGLE REQUIRED	23
.....	23
LOADING MEDIA TO PRINT (IF USING ROLLER)	25
GET READY FOR PRINTING	30
DO NOT STOP THE PRINTING SYSTEM UNLESS NEEDED	30
MAINTENANCE	31
HOW TO RESET WASTE PADS	33
CLEANING THE PRINT HEAD	34
IMPORTANT GENERAL WARNINGS	35
CONSERVATION OF INKS	35
PC SYSTEM REQUIREMENTS	36
TROUBLESHOOTING	37
TECHNICAL SUPPORT	38
TECHNICAL DATA	38

WARNING:

THIS PRODUCT HAS BEEN DESIGNED FOR PROFESSIONAL USE ONLY.

THE INFORMATION CONTAINED HEREIN IS VERY IMPORTANT
FOR PROPER INSTALLATION, OPERATION, MAINTENANCE AND
SAFETY CONCERNING THE USE OF YOUR SYSTEM.

**IT IS RECOMMENDED THAT ALL THE STAFF THAT WORK WITH AND / OR WHO ARE
RESPONSIBLE FOR THE USE AND MAINTENANCE OF THE SYSTEM CAREFULLY READ
THIS MANUAL AND BE FAMILIAR WITH THE NECESSARY PRECAUTIONS,
OPERATIONAL AND MAINTENANCE PROCEDURES.**

GENERAL SAFETY PRECAUTIONS

Make sure to read this information before setting up the machine and keep it handy for future reference. Do not attempt to use the machine in any way that is not described here or in the accompanying manuals. Misuse may result in unexpected accidents, fires, or electric shock.

The following are instructions that, if ignored, could result in serious personal injury. These instructions must be followed for safe operation of the machine.

CHOOSING A LOCATION

- Do not place the machine close to flammable solvents such as alcohol or thinners.
- Do not install the machine in a location that is unstable or subject to excessive vibration.
- Do not install the machine in locations that are very humid or dusty, in direct sunlight, outdoors, or close to a heating source.
- Do not place the machine on a thick rug or carpet.
- Do not place the machine with its back attached to the wall.

POWER SUPPLY

- Use the power cables included with the machine.
- Connect the machine to the specified power source(s).
- Never attempt to plug in or unplug the machine from the power supply when your hands are wet.
- Always push the plug all the way into the power outlet.
- Never damage, modify, stretch or excessively bend or twist the power cord. Do not place heavy objects on the power cord.
- Never plug the machine into a power socket that is shared with other equipment (extension lead/cord, 2- or 3-way adapter, etc.).
- Never use the machine if the power cord is bundled or knotted.
- If you detect smoke, unusual smells or strange noises around the machine, immediately unplug the machine at the power supply and call for service.
- Periodically, unplug the machine and use a dry cloth to wipe off any dust or dirt collected on the plug and the power outlet.
- If the machine is placed at a location exposed to a lot of dust, smoke, or high humidity, the dust collected on the plug absorbs moisture and may cause insulation failure and fire.
- If you hear thunder, disconnect the power supply of the machine and refrain from using it. Leaving the machine plugged in may cause fire, electric shock, or damage to the machine, depending on the thunder storm.

- Ensure that the area around the power outlet is kept clear at all times so you can easily unplug the power cord if necessary.
- Never remove the plug by pulling on the cord. Pulling the cord may damage the power cord, leading to possible fire or electrical shock.
- Do not use an extension lead/cord.

CLEANING THE MACHINE

- Always unplug the machine from the power outlet before cleaning the machine.
- Use a damp cloth to clean the machine. Never use flammable solvents such as alcohol or thinners.
- If flammable solvents come in contact with electrical components inside the machine, it could cause a fire or electric shock.
- If you accidentally switch the machine on while cleaning it, you could injure yourself or damage the machine.

MAINTAINING THE MACHINE

- Do not attempt to disassemble or modify the machine. There are no user serviceable parts inside the machine.
- The machine contains high-voltage components. Never attempt any maintenance procedure not described in this information.
- Do not connect other than recommended devices to a connector on the machine (the cable connector or the USB port etc.). It could cause a fire or electric shock.

WORKING AROUND THE MACHINE

- Do not use highly flammable sprays near the machine. This could cause a fire or electric shock if the spray comes into contact with electrical components inside the machine.
- This product emits low level magnetic flux. If you use a cardiac pacemaker and feel abnormalities, please move away from this product and consult your doctor.

- Never put your hands or fingers in the machine while it is printing. When moving the machine, carry the machine at both ends with two people. Accidental dropping of the machine can cause personal injury and damage to the machine.
- Do not place any object on the machine. Especially do not place metal objects (paper clips, staples, etc.) or containers of flammable solvents (alcohol, thinners, etc.) on top of the machine.
- Be careful to prevent foreign objects from entering the inside of the machine.
- If any foreign objects (metal or liquid) fall into the machine, press the power button to turn the machine off, unplug the power cord, and call for service.
- Do not transport or use the machine on a slant, vertically or upside-down, as the ink may leak and damage the machine.

PRINT HEADS, INK TANKS AND CARTRIDGES

- Keep ink tanks out of the reach of children.
- Do not swallow.
- In case ink gets in contact with skin, wash with soap and water immediately. If irritation to eyes or skin persists, obtain medical advice immediately.
- Never touch the electrical contacts on a Print Head or cartridges after printing. The metal parts may be very hot and could cause burns.
- Do not throw ink tanks and cartridges into fire.
- Do not attempt to disassemble or modify the Print Head, ink tanks and cartridges.

EUROPEAN UNION (AND EEA) ONLY.

This product is not to be disposed of with your household waste, according to the WEEE Directive (2002/96/EC) and your national law. This product should be handed over to a designated collection point, e.g., on an authorized one-for-one basis when you buy a new similar product or to an authorized collection site for recycling waste electrical and electronic equipment (WEEE). Improper handling of this type

of waste could have a possible negative impact on the environment and human health due to potentially hazardous substances that are generally associated with WEEE. At the same time, your cooperation in the correct disposal of this product will contribute to the effective usage of natural resources. For more information about where you can drop off your waste equipment for recycling, please contact your local city office, waste authority, approved WEEE scheme or your household waste disposal service.

(EEA: Norway, Iceland and Liechtenstein)

GENERAL INFORMATION

PRODUCT DESCRIPTION

The DTF-L1800-MINI-PANTHERA printers are based on inkjet technology for use on specialized PET film. With high print speeds and exceptional resolution, the MINI-PANTHERA can print high-quality photos and vector graphics using RIP Software.

To make sure you get all the benefits from your MINI-PANTHERA please read all the pages that follow.

When performing TEST PRINTS, you can print directly to regular paper, by feeding the paper just like you would a regular printer.

IDENTIFICATION

Brand: **DTF**

Model : DTFPRO-MINI-PANTHERA

GENERAL WARNINGS

- The minimum age of staff / operators is 18 years. Keep away from children or untrained operators.
- All persons involved in the use and maintenance must have read and understood this manual.
- Persons under the influence of alcohol or drugs must not operate, or service the product.
- Any faults that may arise should be reported immediately. In case of anomalies that may affect personal safety, the product must not be used until the fault is cleared.
- During operation and maintenance wear personal protective equipment as instructed and follow all safety instructions according to the regulations.

WARRANTY

WARRANTY PERIOD

The printing system is warranted to be free from manufacturing defects under the conditions described in the following paragraph, for a period of 12 months from the date of purchase.

The materials of DTFPRO are warranted to be free from defects in material workmanship. DTFPRO cannot be held responsible for the misuse of its products (such as improper handling or printing methods, utilizing non- genuine DTFPRO [™] inks) or any other improper use by customer. The customer is required to use the equipment as prescribed in this manual.

DTFPRO [™] cannot be held responsible for:

- Loss or damage to goods occurring during transport;
- Damage or defects in the goods caused by any act, neglect or default on the part of the Customer or third parties;
- Damage resulting from defects in the goods caused by defects in materials or workmanship, if not objected in writing within 8 days after delivery of the goods.

The replacement of defective material during the first twelve months from the date of purchase of the machine will be borne by DTFPRO [™] except for damage or otherwise not dependent on manufacturing defects.

The warranty excludes consumable or wear/tear parts such as print heads, cartridges, ink, wiper, dumpers, pipes, pumps and caps.

RESPONSIBILITY

The total liability of DTFPRO [™] cannot, in any case, exceed the value of the defective, damaged or not delivered goods, calculated on the basis of the prices charged on the invoice. DTFPRO [™] cannot be held liable for damages of any kind arising from failure to fulfill its obligations due to force majeure (strikes, accidents, disasters, etc ...). In such cases, the Buyer shall not be entitled to any compensation.

LOSS OF WARRANTY

Warranty voided in the event of any of the following:

- Disassembly or modifications to the printer of any kind (including electrical, mechanical, hydraulic, pneumatic, etc.);
- Use or maintenance of the printing system other than as intended or indicated in these instructions;
- Use of unsuitable materials and inks or cleaning fluids that are not genuine DTFPRO [™];
- Insufficient monitoring of parts subject to wear/tear;
- Damage as a result of voluntary or involuntary maintenance of machinery and equipment located in the vicinity of the product;

DTFPRO [™] assumes no liability for tangible and intangible assets to persons and / or property, the warranty becomes void immediately and certifications / declarations of conformity are no longer valid.

JURISDICTION

Any dispute will be referred to Los Angeles County, CA, USA.

The terms shall be construed expressly accepted without reservation

INSTRUCTIONS FOR USE

PREVENTION OF MISUSE REASONABLY EXPECTED

- Do not place any objects other than print media provided on the floor of the press;
- Do not place any object on the printer, especially while it is operating;
- Do not remove the power supply and do not turn off or unplug the printer while it is printing or while a computer is configuring the printer or sending files
- To turn on and turn off the printer using the power switch;
- Disconnect the cables always taking them from the body of the connectors, never pulling the strings
- Do not force the print media not in accordance with the provisions of the normal operation of the printer;
- Do not use media other than those specified;
- Do not expose to electromagnetic fields of high intensity;
- Do not expose to temperatures and / or humidity outside the allowable range;
- Do not subject to vibration and / or mechanical shock outside the allowed range;
- Do not spill liquid on the printer and / or handling system of the media;
- Inspection and repair should be performed by trained personnel as recommended by DTFPRO - tampering, improper use, repairs and / or action taken by anyone not authorized by DTFPRO void the warranty

CAUTIONS ON USING THE MANUAL

This Operation and Maintenance Manual provides basic information for using the printer DTFPRO L1800. It describes how to remove the printer from the box, select and load print media, install the RIP printing (optional) on your computer and choose the software settings for the best printing results. The Operation and Maintenance Manual is an integral part of the product and must be retained. A copy should be stored in a place protected from all agents that can damage and accessible for easy reference.

DTFPRO™ implements a policy of continuous development and improvement. DTFPRO reserves the right to make changes and improvements to this manual and / or product specifications without notice. Therefore, the contents of this manual and specifications of the product described herein are subject to change without notice and without obligation. Reproduction, transfer, distribution or storage of part or all of the contents of this document in any form is prohibited unless prior written approval from DTFPRO .

READ THIS FIRST

The safety instructions are intended to prevent injury and damage to both the product and the environment. All operators are required to read and constantly observe these safety instructions.

Please download and look at this video first before proceeding any further.

http://files.inklibrary.com/DROPBOXALT/DTF/PANTHERA_MINI_INSTRUCTIONS_VID.mp4

DISCLAIMER

The company DTFPRO [™] assumes no responsibility

- For any personal injury and property damage, environmental and / or operating arising from incomplete or non-compliance with operating and maintenance instructions
- If you are experiencing personal injury, property damage and / or faults caused by misuse of the products and / or aftermarket parts and / or different from those recommended in the specific operating and maintenance or DTFPRO .

PREPARING THE PRINTING SYSTEM

WHERE TO PLACE THE PRINTER

This printing system must be placed in a dedicated environment, air-conditioned throughout the year between 60 ° F and 80 ° F, with relative humidity controlled between 30% and 60%, non-condensing, away from direct sunlight sun, dust and dirt, vibration-free, protected from mechanical impact and / or shock. Daily, accurate maintenance must be performed on this printing system, using the appropriate accessories and detergents / cleaning.

INSTALLING THE PRINTER

UNPACKING

Open the box with the printer. This printer is shipped in parts. With the help of a person gently remove the different parts from the box, following the instructions on this manual for the setup and use of the printer.

***KEEP THE PRINTER BOX FOR FUTURE
TRANSPORT.***

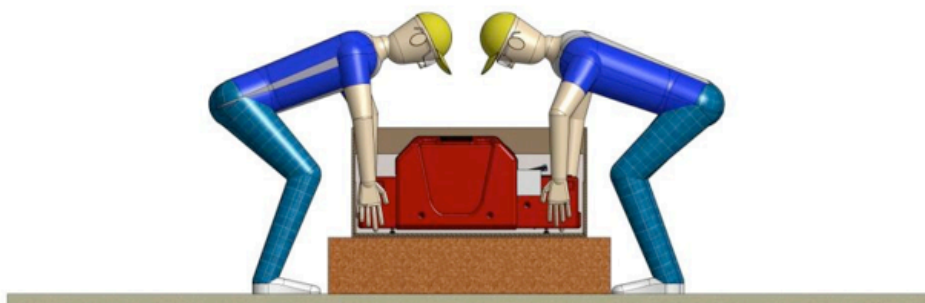


REMOVE THE PRINTER FROM THE BOX AS SHOWN IN THE PICTURE BELOW.

RIMUOVERE LA STAMPANTE DALLA SCATOLA COME MOSTRATO NELLA FIGURA.

DÉPLACER L'IMPRIMANTE DE LA BOÎTE COMME INDIQUÉ DANS L'IMAGE CI-DESSOUS.

REMOVER LA IMPRESORA DE LA CAJA COMO ESTA INDICADO EN EL DIBUJO SIGUIENTE.



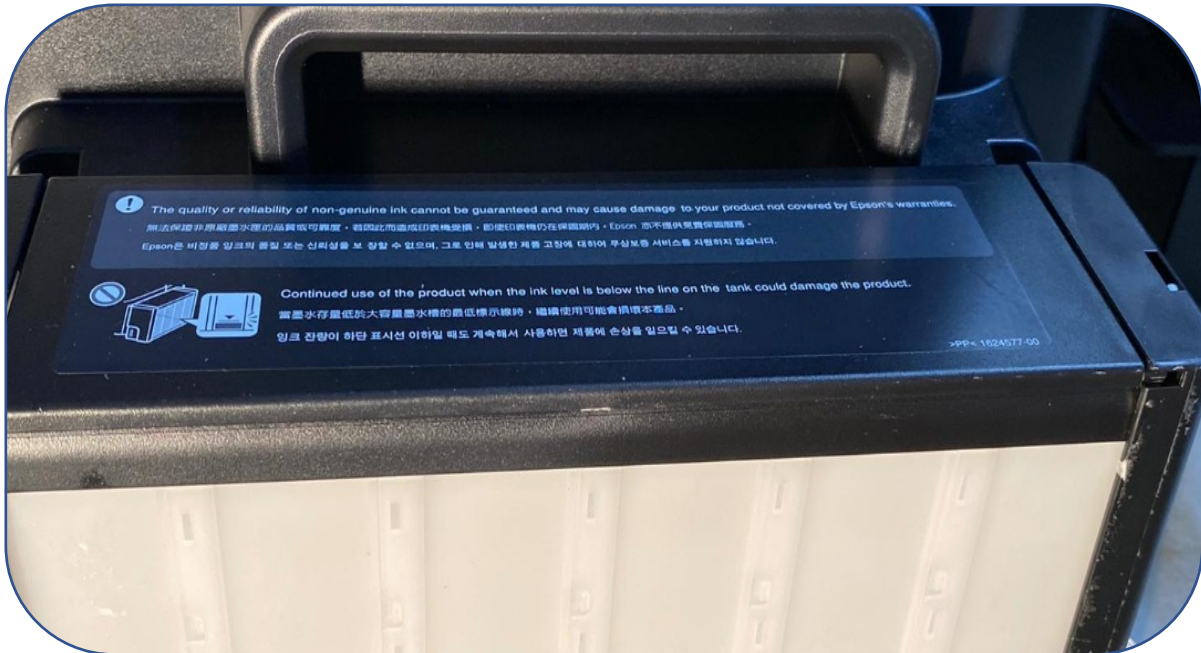
MATERIALS

Products provided with the printer.

- Printer with CISS tanks
- Printer Tray
- Roll Feeder
- Curing System & Powder Station
- Roller Feeder Exit
- Rollprint Software
- DTFPRO10 Rip

TANK INSTALLATION

The tanks should be installed in the following order.
Disengage the Ink tank from the printer side



Open each plug and insert the appropriate color of ink – substituting Light Cyan and Light Magenta (middle 2 colors with White) Once filled with ink close the plugs and turn the tap



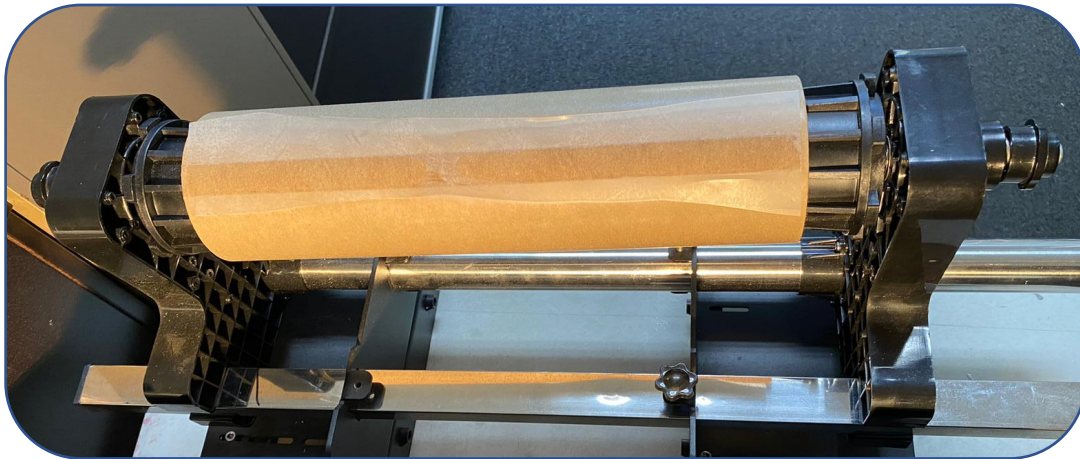
Once the ink has been loaded into the containers, reposition the latter on the support.

Turn the tap in the figure with the indicator upwards to open the tap. **FOR THE FIRST USE ONLY**

CHECK PERIODICALLY THE INK LEVEL INSIDE THE MAINTENANCE TANK – WHEN $\frac{3}{4}$ FULL, EMPTY AND WASH IT WITH WATER, THEN INSERT IT BACK IN THE SAME POSITION MAKING SURE THAT THE TUBE IS INSERTED IN THE BOTTLE. FILL YOUR INK TANKS WITH INK WHEN THEY ARE $\frac{1}{4}$ EMPTY.

ROLL FEEDER SETUP

Once all parts installed together the Roll feeder should look like the below.



PAPER TRAY REMOVAL

In order to remove the Tray from the printer locate the white spring release tool on the right-hand corner of the printer tray. Using a small screwdriver press the spring to the left in order to unlock and remove the Paper tray.



Paper Tray in printer



Push Left on Paper Tray spring lock



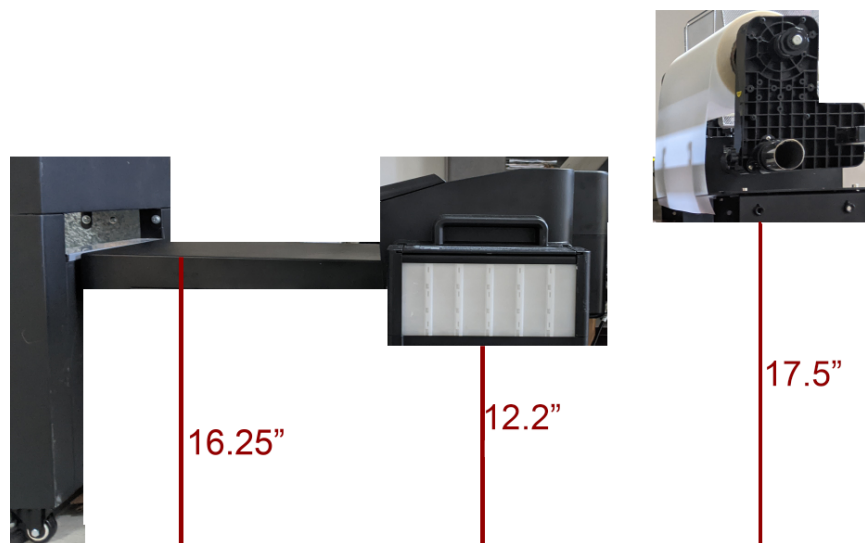
Paper Tray spring lock disengaged

EXIT TRAY PLACEMENT

The exit tray placement hooks onto the printer and needs to be set up as follows:



- 1) The height of the printer should be approx. 12.2" from the table to the bottom of the printer; the exit tray should be 16.25" from the table to the top of the tray; and the roll feeder should be 17.5" from the bottom of the feeder to the table



Ensure that prior to any work, all the preventive measures are put in place in order to operate safely and to prevent any damage to persons and property.

OVEN AND POWDER STATION

Dangerous electrical voltage: The Curing and Powder machine needs to be installed on a VOLTAGE TRANSFORMER which is shipped together in this printer.



The printer ships with a Voltage transformer. Only the PowerStation and Oven are to be connected to this Voltage transformer. Insert the plug into the right socket as shown above left. And do not change the back switch (110V) as in the picture top right.

ALL OTHER PLUGS CAN BE CONNECTED TO STANDARD USA ELECTRICAL OUTLETS OE EXTENSION

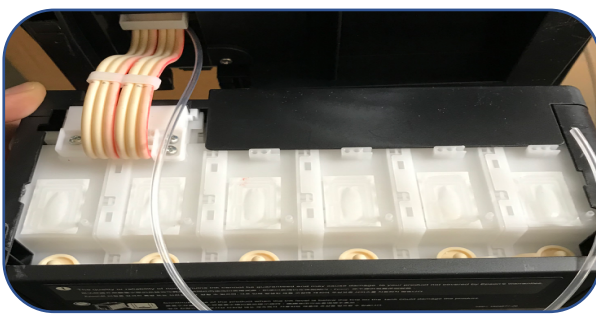
BEFORE TURNING ON THE PRINTER

Before powering on the printer, make sure that

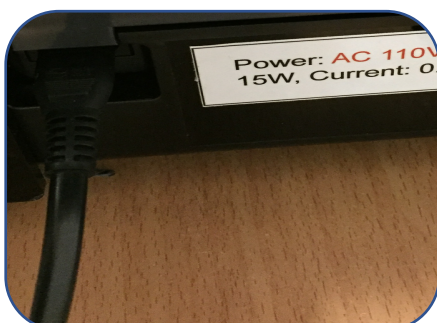
- 1) The paper Feeder is situated higher than the printer and the film fed into the back of the printer feeder does not block the 4 sensors



- 2) The Printer has been connected to the power supply
- 3) The Oven and Powder station is connected to the Voltage transformer
- 4) The Paper Exit feeder is connected to a power outlet
- 5) Make sure that the Waste tube is connected to a Plastic bottle



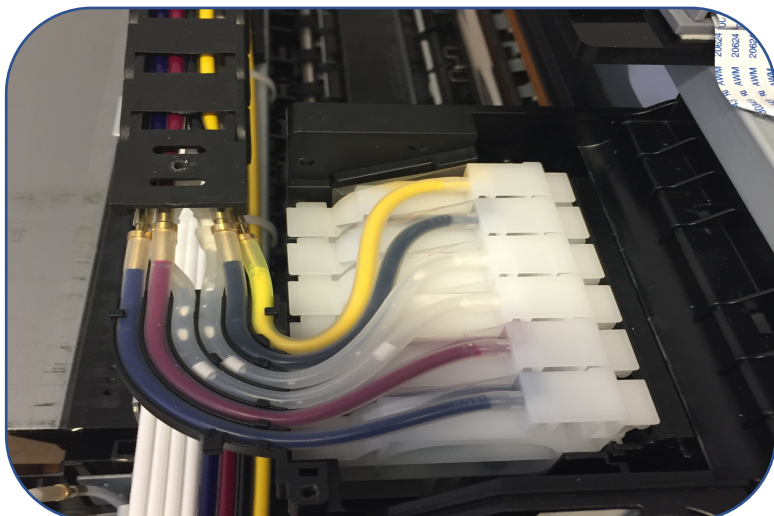
Now Connect the power cord into the back of the printer and press the power button in the front to turn on the printer.



Once the printer has powered on and the printhead has lifted up from its home position (after 3-4 seconds) remove the power cable from the back of the printer.

This will allow the head to move freely to the right hand side of the printer of the printer.

Move the head such that you have access to all 6 dampers. Remove them by clicking each out of place using a flat screw sriver.



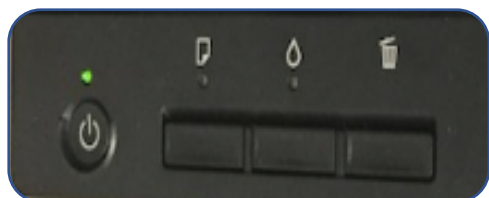
Disengage the respective Ink tank Damper and use a Syringe to insert at the bottom and draw back on the plunger in order to suck the air out and fill the damper with ink to 99% full.



TURNING ON THE PRINTER

Once all the Dampers have been primed with ink proceed and reinsert all dampers into place, move the printhead back into the same position as before and slide the printhead to the right hand side (home position).

Now you can insert the power cable back into the printer at the back and power on the printer in the front. Once you can power on the printer from the front .

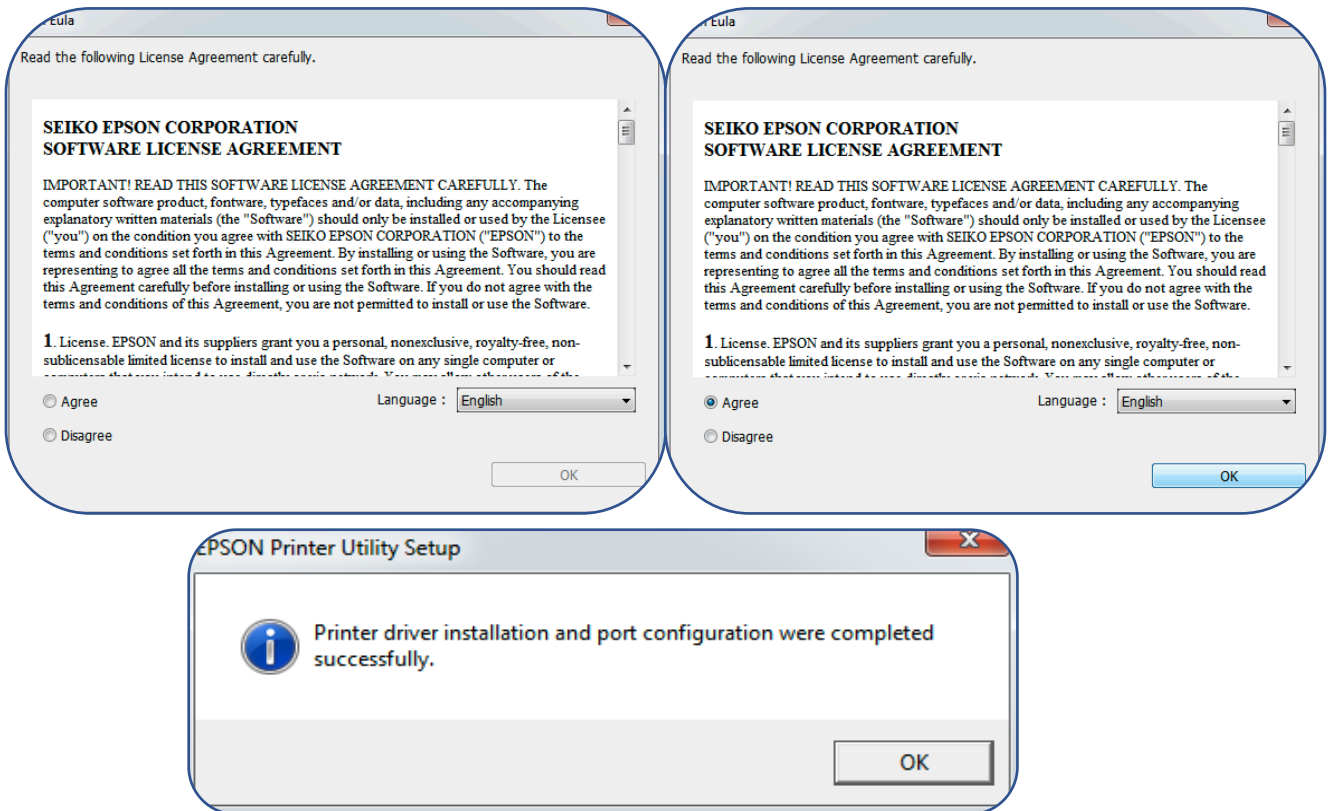


Connect the USB cable to the PC.

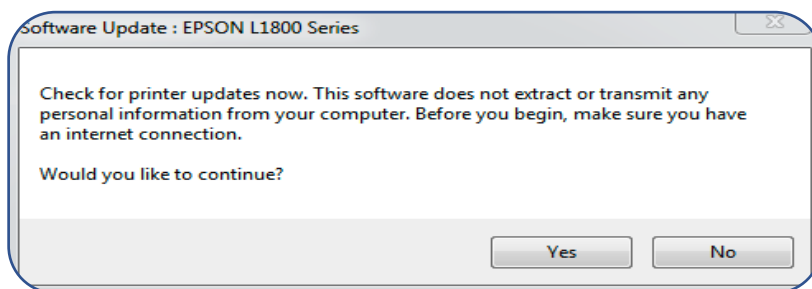
DRIVER INSTALLATION

The drivers to be installed are for the “Epson L1800” and can be downloaded at the following portal.
<https://download.epson-europe.com/pub/download/3786/epson378692eu.exe> for Windows

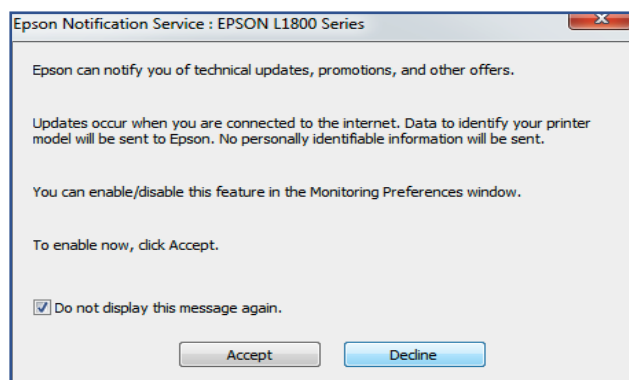
Download the Drivers and Install. – select Agree and OK



Do not update your firmware. Select No to Software Update.

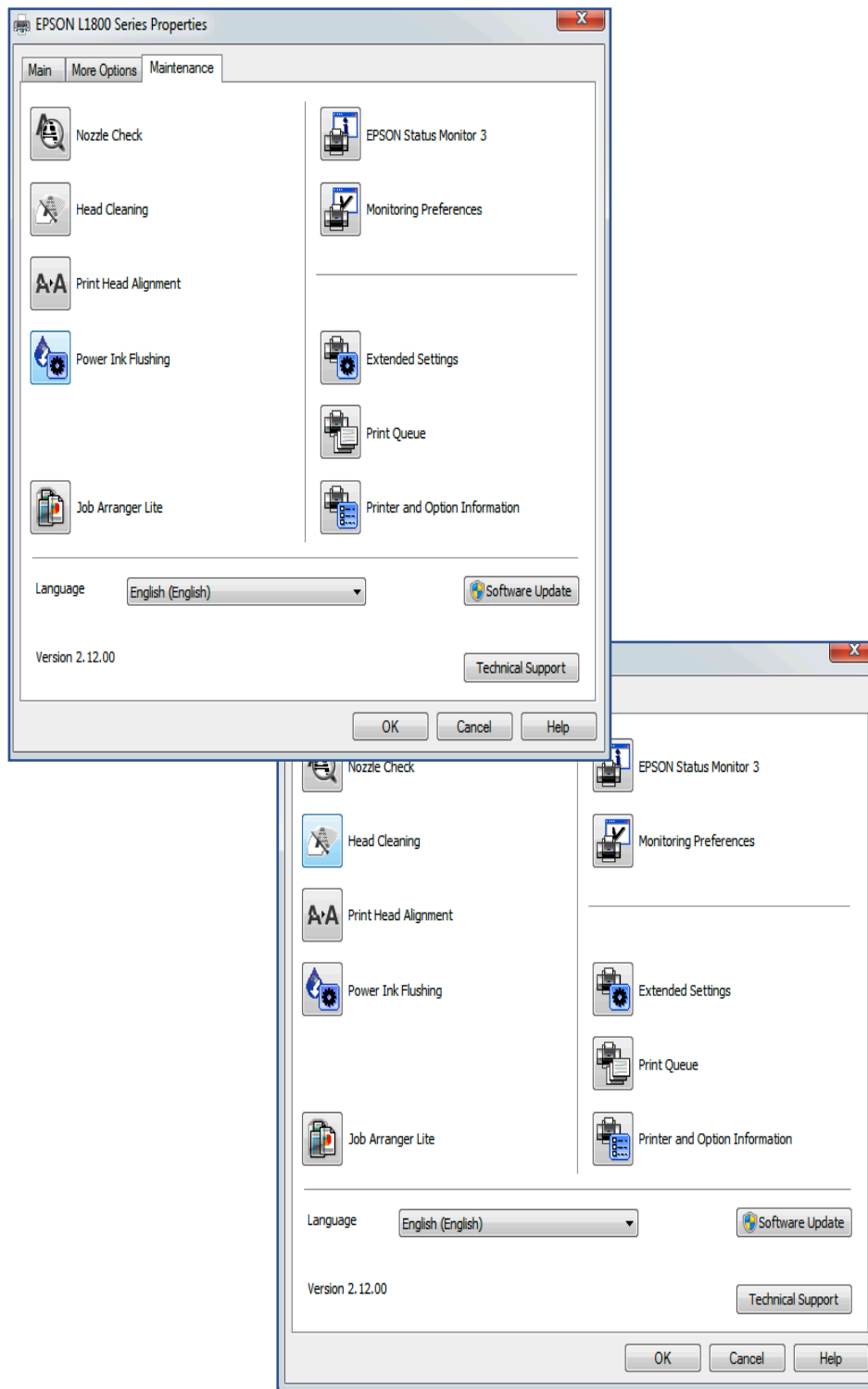


When the printer is in use, you may get alerts such as the one below, click on “Do not display this message again” and then “Decline”.



INK CHARGING

First time charging should be used with Power Ink Flushing

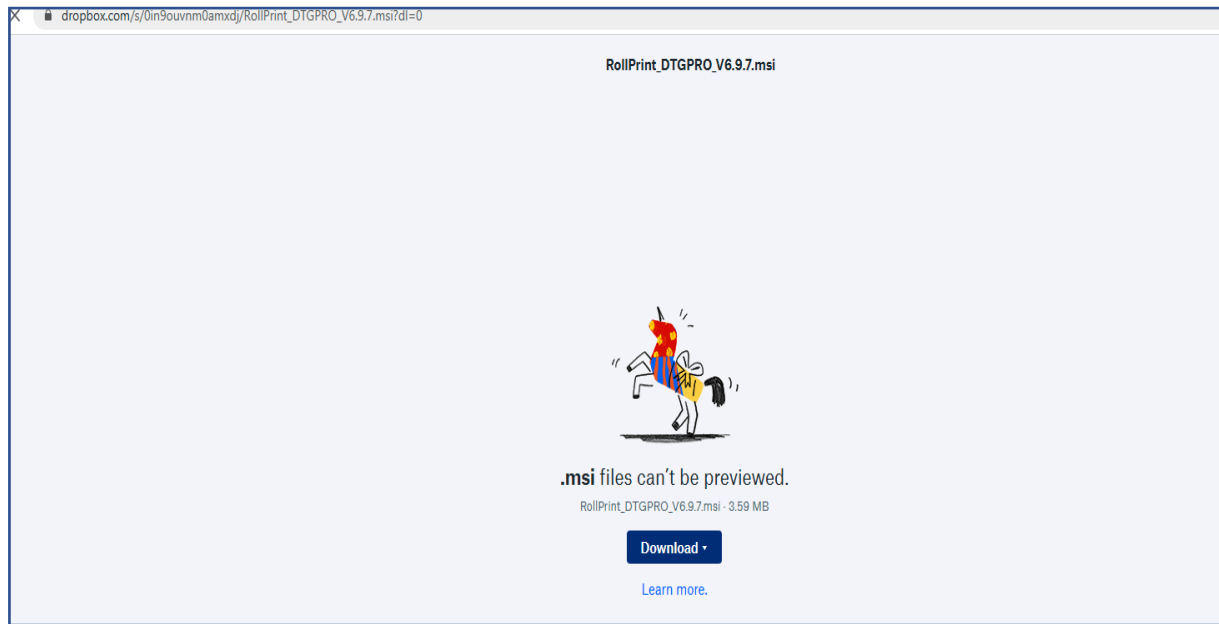


INSTALLING ROLLPRINT SOFTWARE – dongle required

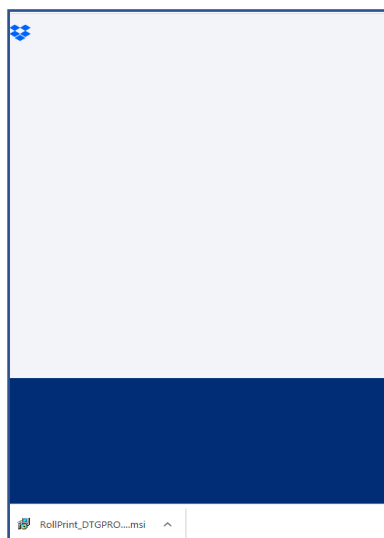
The installer for this program is per below: But the Dongle will need to be purchased (If you lose the dongle you will need to purchase the dongle again so please keep the dongle connected to the computer always. The Dongle will have shipped in a DVD box. Inside it contains a Blue USB Dongle. In order for the software to work – the dongle needs to be connected to the computer.

https://www.dropbox.com/s/0in9ouvn0amxdj/RollPrint_DTGPRO_V6.9.7.msi?dl=0

Once you click on the installer – even if you don't have a Dropbox account you can simply download the file by clicking download. Once downloaded you will have a Zipped file which will need to be unzipped either using Winzip or Rar or another extraction program.



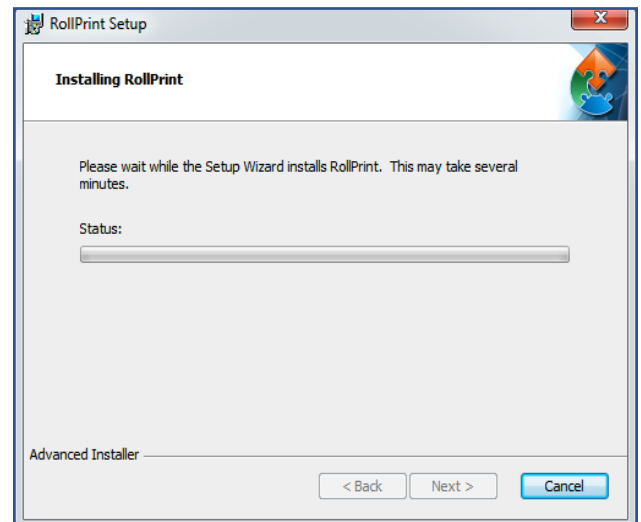
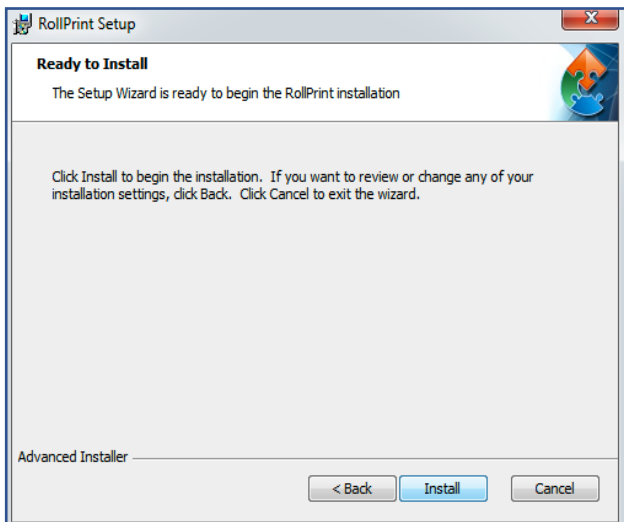
Click Download



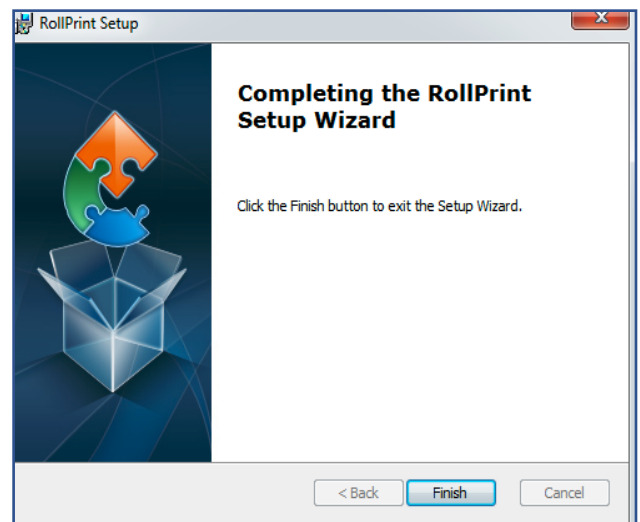
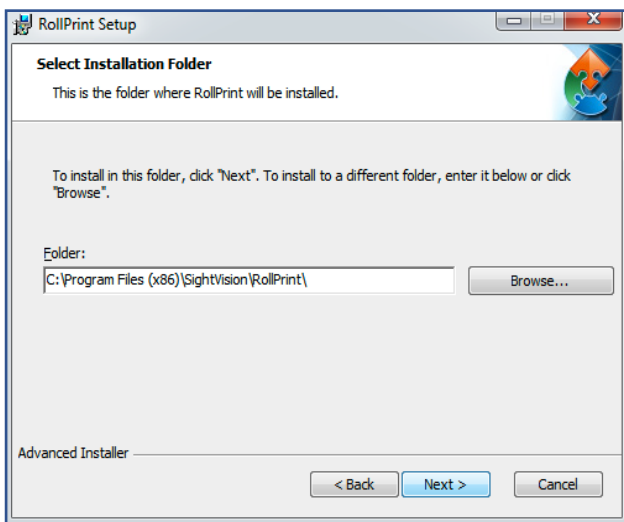
Select the MSI File and install.



Select Run as DTGPRO is a trusted source.



Select Install to begin Installation of the Rollprint by DTGPro



Select Next

And Finish to intall



An Icon Rollprint.exe will be placed on your desktop

Double click to open

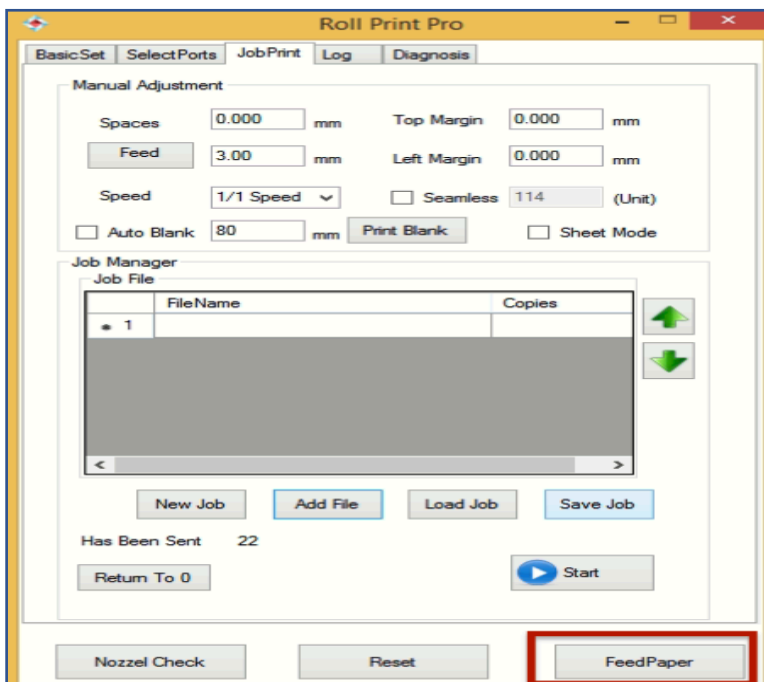
LOADING MEDIA TO PRINT (IF USING ROLLER)

Please watch the video attached showing how to use the printer and loading of the paper



Inert the Film into the back of the printer as the image shown above – Carefully noticing that you are not covering up the 4 paper sensors

How to feed the DTFPRO roll film:
(watch from 1:11 to 1:41 of video)



OPEN ROLLPRINT PRO AND
CLICK ON FEED PAPER

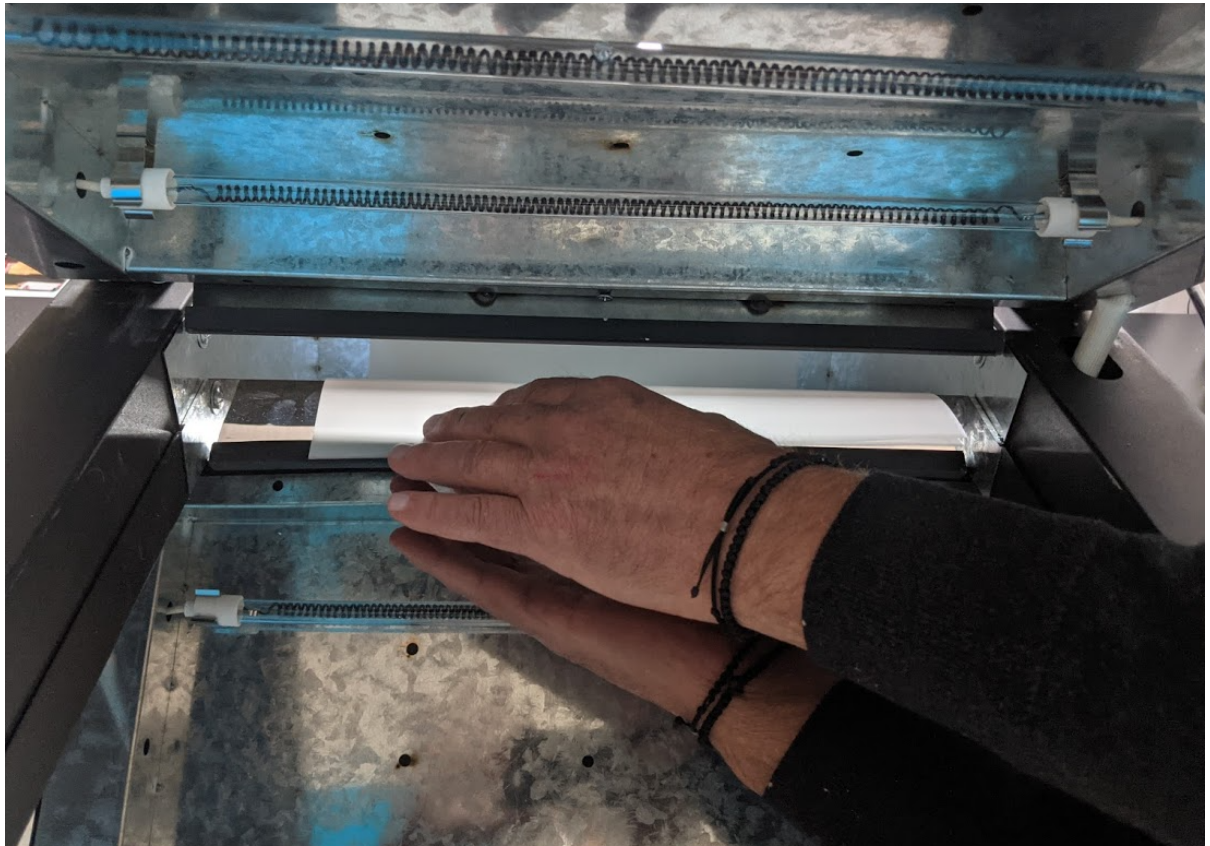
How to feed the DTFPRO roll film:

(watch from 1:11 to 1:41 of video)

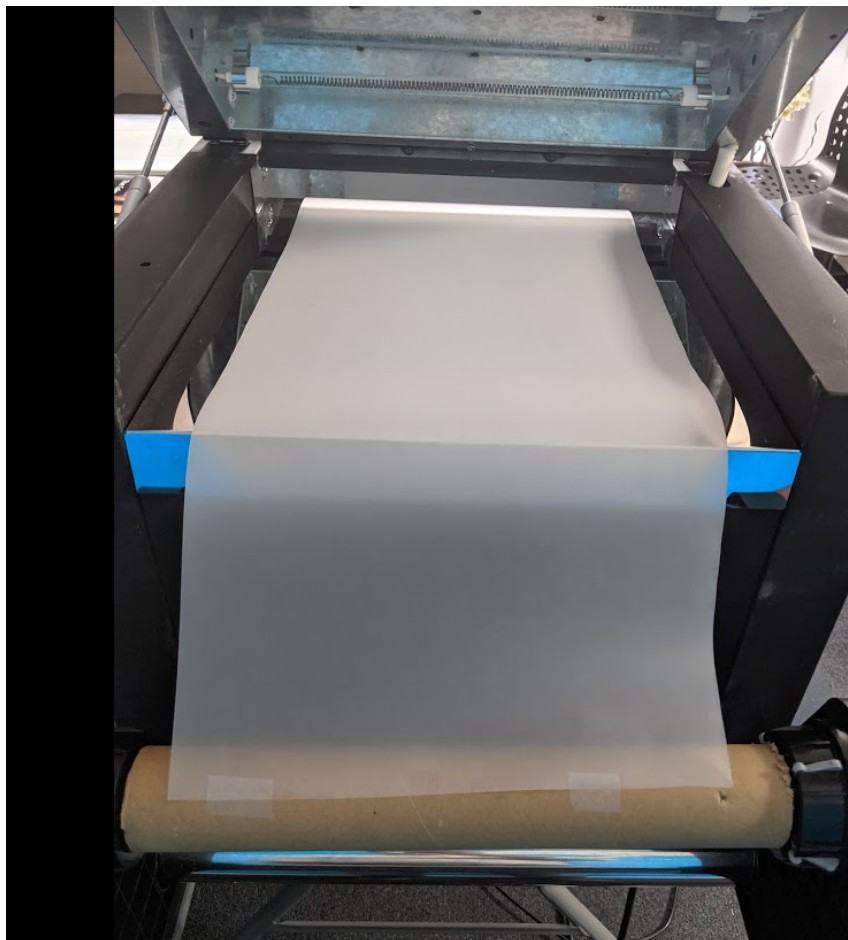


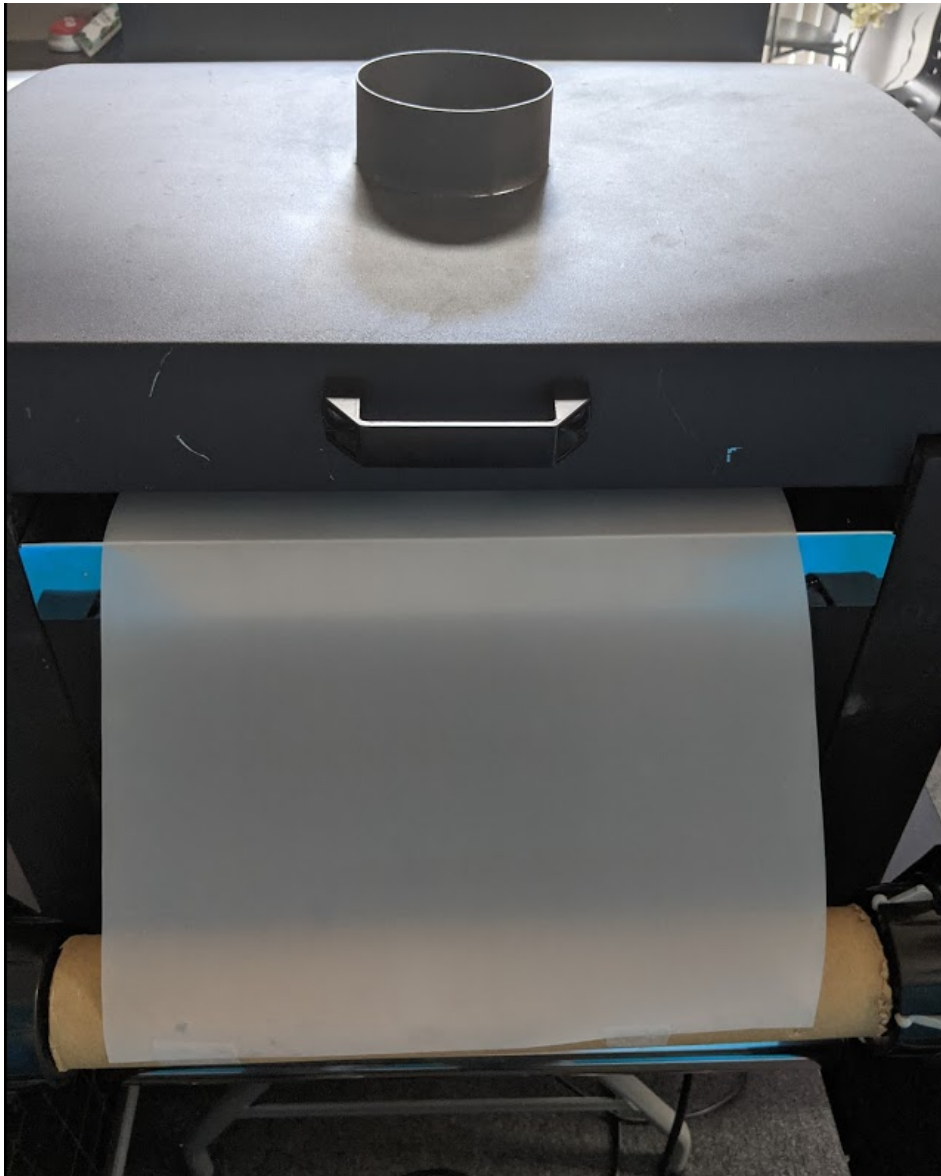
Then pull it through into the heating station:





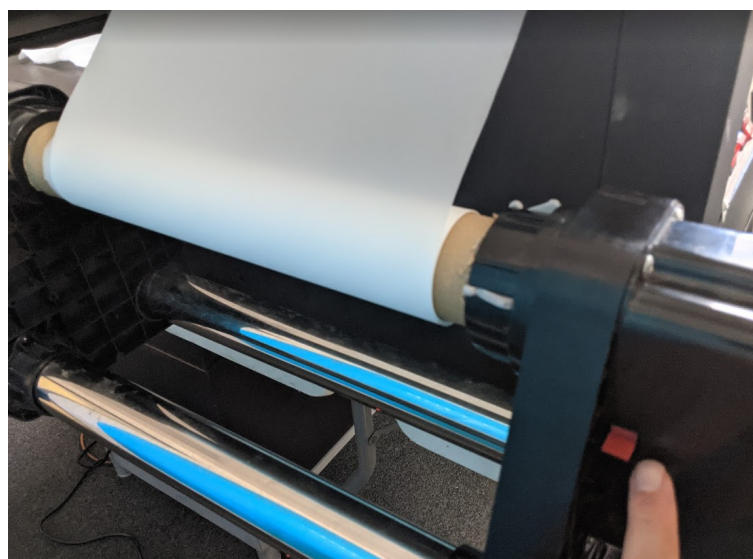
And connect the film to the roll collector:





How to use the powdering station controls:

(watch from 2:36 to 4:28 of video)





POWER SWITCH: turns the powder machine ON or OFF

TEMP SWITCH: turns the heater on the machine ON or OFF, and the temp controls are on the top left

POWDER APPLICATOR: ON / OFF switch with speed dial above (this controls the application of powder to the film)

POWDER SHAKER: ON/OFF switch with speed dial above (this controls the shaker which shakes off excess powder)

Excess powder collects in the collection chamber (and can be re-used):



HOW TO PRINT:

(watch video from 4:30 to 6:18 of video)

TROUBLESHOOTING:

How to deal with a paper error:

(watch from 6:24 to 8:42 of video)

How to reuse the starter film / waste film:

(watch from 8:43 to 9:32 of video)

GET READY FOR PRINTING

Once the film has been inserted you need only to select your file in your RIP software, using the settings you desire. Then you will print to a Virtual L1800 (File) printer in order to generate a PRN file. Once the PRN file is generated you will then use the RollRip software in order to load the file and print.

DO NOT STOP THE PRINTING SYSTEM UNLESS NEEDED

If you have selected an image to be printed – if it is a small file it is recommended that you leave the printer finish the print. Cancelling the print job will result in an error. At this time you would need to cut the paper and start from the beginning. When you power off the printer the Roll will need to be removed prior to powering on because the printers rollers will move about 2m of film and give a paper error.

EMERGENCY STOP

If you have to proceed with the emergency stop of the printer, Remove the power cable from the back of the printer.

We recommend that unless it is an absolute necessity to cancel the print job to let the print job finish. It is much easier to discard 1 file rather than to reset up the paper/roll.

MAINTENANCE

Following these simple steps daily will ensure that your printer lasts longer and help you achieve optimal performance with little to any down time from your DTFPRO L1800 printer.

DAILY ROUTINE

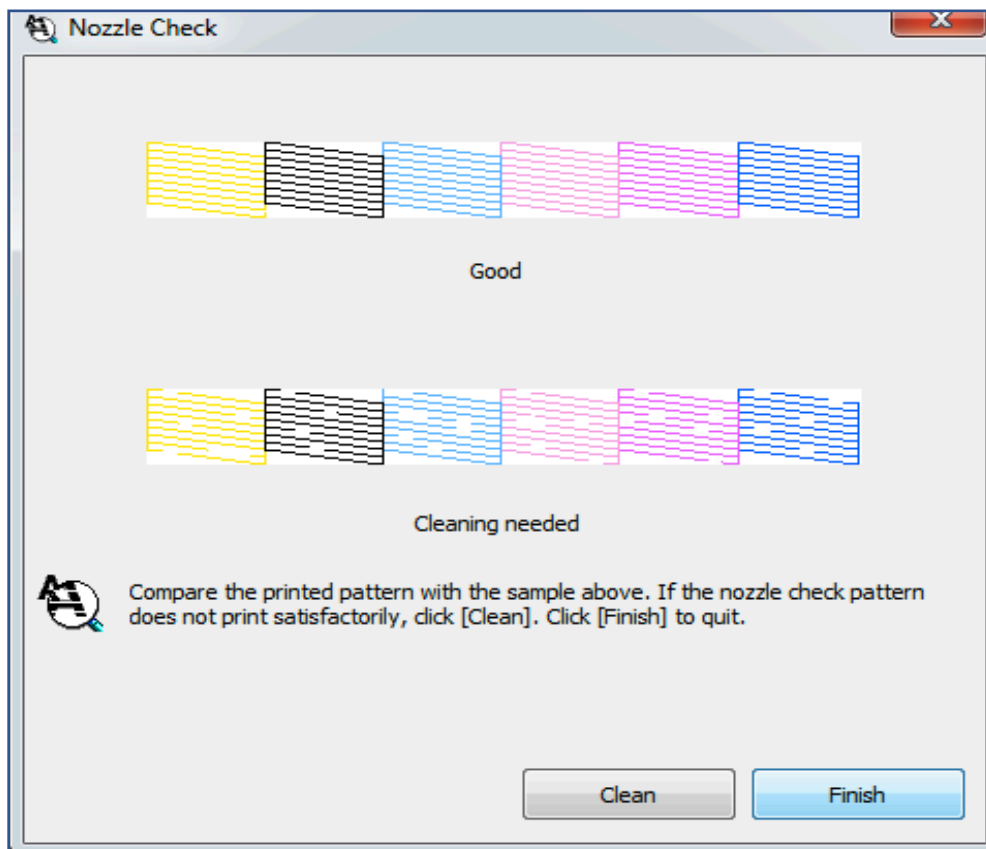
- Perform nozzle checks and head cleaning at the beginning of the day if your nozzle check is not more than 90% or has more than 2 missing spots then you would need to clean your heads. You are using a small amount of film so you should run the nozzle check through Rollprint itself
- Perform nozzle check regularly throughout the day (the amount of ink consumed is negligible) to ensure top performance. If you notice more than a 10% nozzles dropout in any one of them, or one single nozzle in the color channels, perform a head cleaning operation. Even if you have film inserted in the printer you can lift the Rollers up with the release tool and insert a white sheet of paper and print a nozzle check (using Rollprint) without needing to remove the film.
- . Controls for Maintaining the White Ink . The white ink is thicker than the rest of the inks so each day when you come to the office you need to shake the CIS System manually for 15-20 seconds

PERIODIC MAINTENANCE

- Empty the maintenance tank placed when tank is $\frac{3}{4}$ full
- Manual Flush of print heads may be needed in event of clog that cannot be resolved with regular cleaning cycle / Power Flush. (printhead would need to be removed- not covered in this manual)

Below are two sample nozzle check patterns.

Compare the quality of the printed check page with the sample shown below. If there are no print quality problems, such as gaps or missing segments in the test lines, the print head is fine.

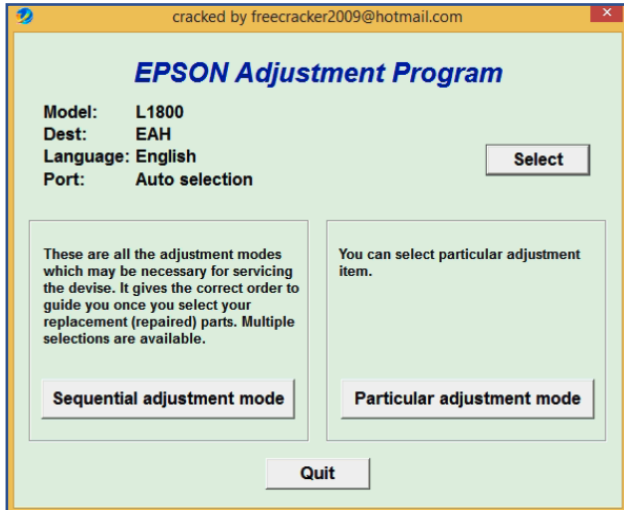


If any segment of the printed lines is missing, as shown below, this could mean a clogged ink nozzle or a misaligned print head.

HOW TO RESET WASTE PADS

Open the L1800 Adjustment program from the link below: You will need to disable any Antivirus or Windows defender

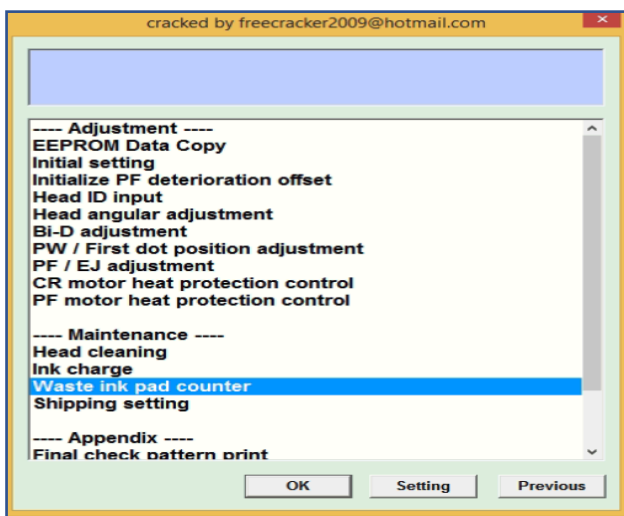
<https://www.dropbox.com/sh/jpxsmkmc2oygyw/AACGe4VhQl25IHbZKj8xwMtlA?dl=0>



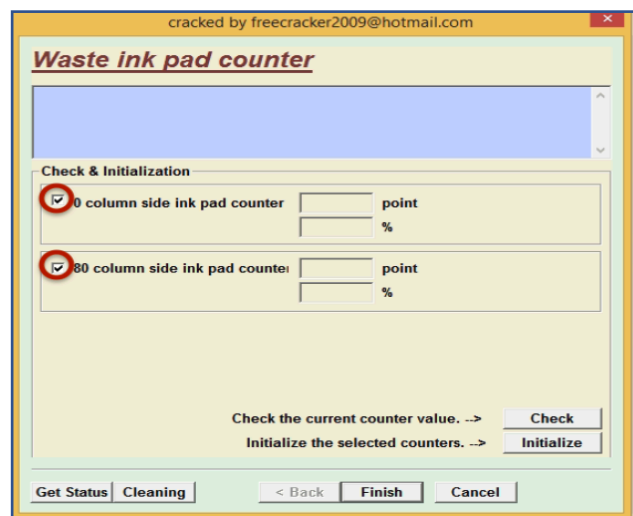
Open Adjustment program



Now select your Port for the Printer L1800



Select Waste Ink Pad Counter



Check both lines and then click Check

Then Select both Lines and click Initialize

You will be prompted to power off the printer. NOTE: If your printer has the Auto roll feeder attached then you need to push the Paper release Tool in and disengage the paper feeder roller.

If you are using sheets then you can simply power off the printer.

Now power on the printer. For sheet feeder proceed as normal.

For Auto roll feeding proceed with Loading a Media to Print (...Page 21)

CLEANING THE PRINT HEAD

If you find that the printout is unexpectedly faint or that dots are missing, you may be able to solve these problems by cleaning the print head, which ensures that the nozzles are delivering ink properly.

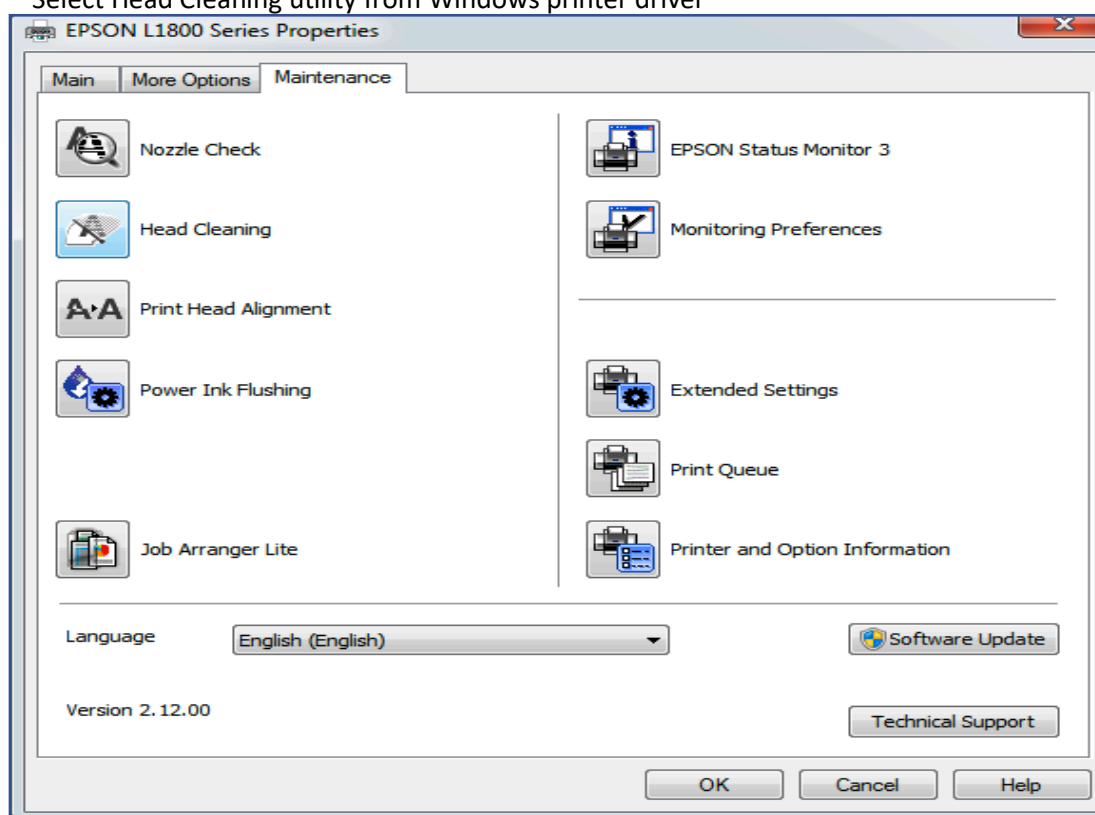
Note:

AS THE PRINT HEAD CLEANING USES INK FROM ALL THE DAMPERS, CLEAN THE PRINT HEAD ONLY IF PRINT QUALITY DECLINES; FOR EXAMPLE, IF THE PRINTOUT IS BLURRY OR THE COLOR IS INCORRECT OR MISSING.


USE THE NOZZLE CHECK UTILITY FIRST TO CONFIRM THAT THE PRINT HEAD NEEDS TO BE CLEANED. THIS SAVES INK.

WHEN INK IS LOW YOU MAY NOT BE ABLE TO CLEAN THE PRINT HEAD. WHEN INK IS FINISHED YOU CANNOT CLEAN THE PRINT HEAD.


Select Head Cleaning utility from Windows printer driver



Follow the on-screen instructions.

The  power light flashes while the printer performs the cleaning cycle.

Caution:

NEVER UNPLUG THE PRINTER OR TURN OFF THE POWER WHILE THE  POWER LIGHT IS FLASHING. DOING SO MAY DAMAGE THE PRINTER.

Note:

IF PRINT QUALITY HAS NOT IMPROVED AFTER REPEATING THIS PROCEDURE ABOUT FOUR TIMES, USE THE POWER INK FLUSHING (Can only be used Once every 12 hours)

IMPORTANT GENERAL WARNINGS

STORAGE AND OPERATING CONDITIONS

- Always use the included printer cover to cover the machine from dust and debris.
- Do not operate or store your DTF-L1800-R printer or the DTFPRO inks in an environment with a temperature over 77° F or under 64° F.
- Only use your DTF-L1800-R printer on a level surface free of vibrations.
- Do not store or use your DTF-L1800-R printer or DTFPRO inks in direct sunlight.

EXPIRATION OF INKS

THE EXPIRATION DATE ON THE INK REFILL BOTTLES (THE PRODUCT), REFERS TO THE PRODUCT IN ITS ORIGINAL, SEALED AND PROPERLY MAINTAINED STATE.

CONSERVATION OF INKS

WARNING!

WHEN THE INKS ARE LOADED IN THE PRINTING SYSTEM, THE ENVIRONMENT MUST ALWAYS BE MAINTAINED AT A TEMPERATURE BETWEEN 64.4° F AND 77° F, BOTH WHEN THE PRINTING SYSTEM IS IN OPERATION, AND WHEN THE PRINTING SYSTEM IS TURNED OFF.

PC SYSTEM REQUIREMENTS

MINIMUM SYSTEM REQUIREMENTS

- CPU: P4 1.25 GHz
- Hard Drive: 20 GB
- RAM: 256 MB (2GB for Vista)
- USB: 1.1
- Operating System: 32 bit Windows 7, 8.1

SUGGESTED SYSTEM REQUIREMENTS

- CPU: P5 2 GHz (or higher)
- Hard Drive: 120 GB
- RAM: 1 GB (2GB)
- USB: 3.0
- Operating System: Windows 10™ 64bit

TROUBLESHOOTING

MISCELLANEOUS PRINTER PROBLEMS

Problem: Prints are clear on one side but blurry on the other side, also applies to same problem front to back.

Solution: The DTFPRO printer has to be on a level surface to print correctly across the whole surface of the film.


Problem: Printed images have bands or lines in it.

Solution: Perform a nozzle check to verify all the nozzles are printing. If some are not printing perform head cleaning or Power flush if needed.

Problem: Prints appear split and blurry.

Solution: It could happen during printing on media with an irregular surface. Disable "High Speed" in Advanced tab on printer driver.

Problem: All lights are off.

Solution: Press the  button to make sure the printer is on. Turn on the printer and make sure that the power cord is securely plugged in. Make sure that your outlet works and is not controlled by a wall switch or timer.

Problem: Ink light and Paper light flash simultaneously

Solution: Check on the status monitor. If the screen says that some parts inside your printer need to be serviced, then you need to reset the waste pads. Connect the adjustment program to reset the waste counter.

TECHNICAL SUPPORT

You should always contact an authorized dealer of DTFPRO for assistance or for any technical request during normal business hours. If you need further assistance you can contact DTFPRO at the references provided later in this manual.

TECHNICAL DATA

BRAND: DTFPRO

MODEL: MINI-PANTHERA

COLORS (Ink cartridges) :	CYAN – MAGENTA – YELLOW – BLACK – WHITE
MAX PRINTING AREA:	13" x 19" (A3+)
MAX. RESOLUTION:	1440 dpi (Horizontal) x 5760 dpi (Vertical)
TRAY LOADING:	MANUAL FEEDER / AUTO ROLL FEEDER
POWER SUPPLY:	110/240 V – 50/60 Hz
MAX. CONSUMPTION:	< 55W
OPERATING TEMPERATURE:	64.4° F AND 77° F
STORAGE TEMPERATURE:	64.4° F AND 77° F
HUMIDITY:	30% - 60% , NO CONDENSATION
NOISE EMISSION:	<70dB as per UNI EN ISO 9612, measured as per UNI EN ISO 11904-110